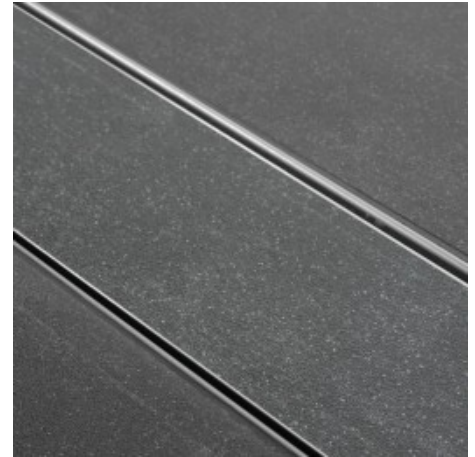


Multi Horizontal outlet



Grate
Build-in set

Tile
MSI / Water seal 30/35/50 mm

Easy Drain Multi, the world's most multifunctional shower drain, has various design grates and almost limitless application possibilities. The ABS trap body can be shortened to any height and is supplied with three water seals. If required, another type of Multi trap body can be ordered separately.

Product benefits

- Connection - 360° rotatable
- Overall depth - starting from 89 mm
- Grate - height adjustable
- Tile grate depth - 12 mm (the tile shown is not included)
- ABS Trap body - pivoted and height adjustable
- Drainage Syphon - removable and cleanable

Technical Information:

Model:

Linear shower drain

Characteristics:

Adjustable grate, EN 1253 certified, Sound-proof, Waterproof, Wheelchair accessible

Floor Finish:

Mosaic, Tile / Ceramic

Floor type:

Concrete / Sand cement

Grate material:

Tile

Height adjustable stands:

Included

Installation option:

Floor

Outlet:

Horizontal outlet

Pre-assembled sealing membrane:

Not included

Siphon:

Pivoted and adjustable drainage siphon, Cleanable drainage siphon, Height adjustable drainage siphon

Water seal height:

30 mm, 35 mm, 50 mm

Grate width:

81 mm

Location in a shower:

Between two walls, Free in the floor, One-sided

Min installation depth:

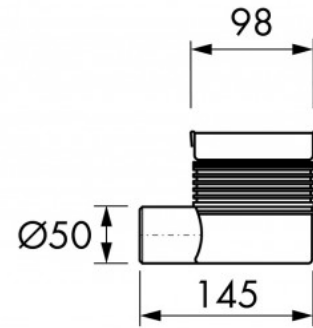
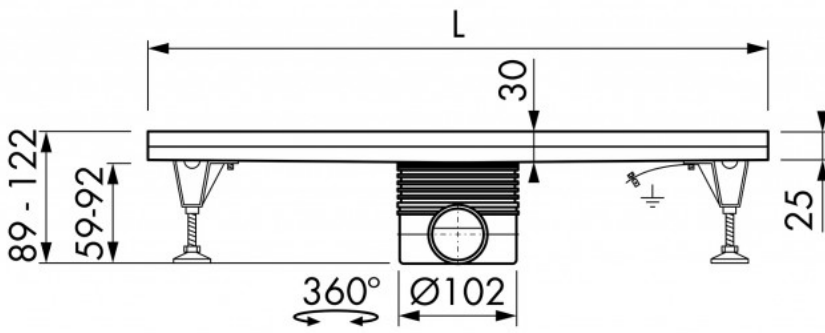
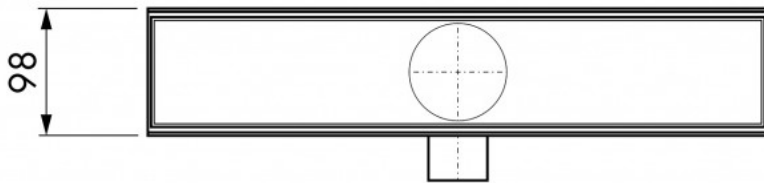
89 mm

Max drainage capacity entrance:

38 l/min

Max drainage capacity backside:

49 l/min



MANUFACTURER
Easy Sanitary Solutions
Nijverheidsstraat 60 | 7575 BK Oldenzaal | The Netherlands
info@esspost.com | www.easydrain.com | www.easydrain.co.uk

ESS PRODUCTS ARE PATENTED AND REGISTERED TRADEMARKS MADE BY ESS